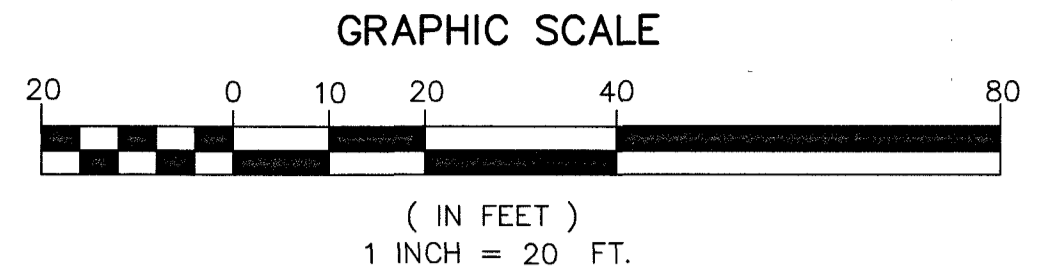


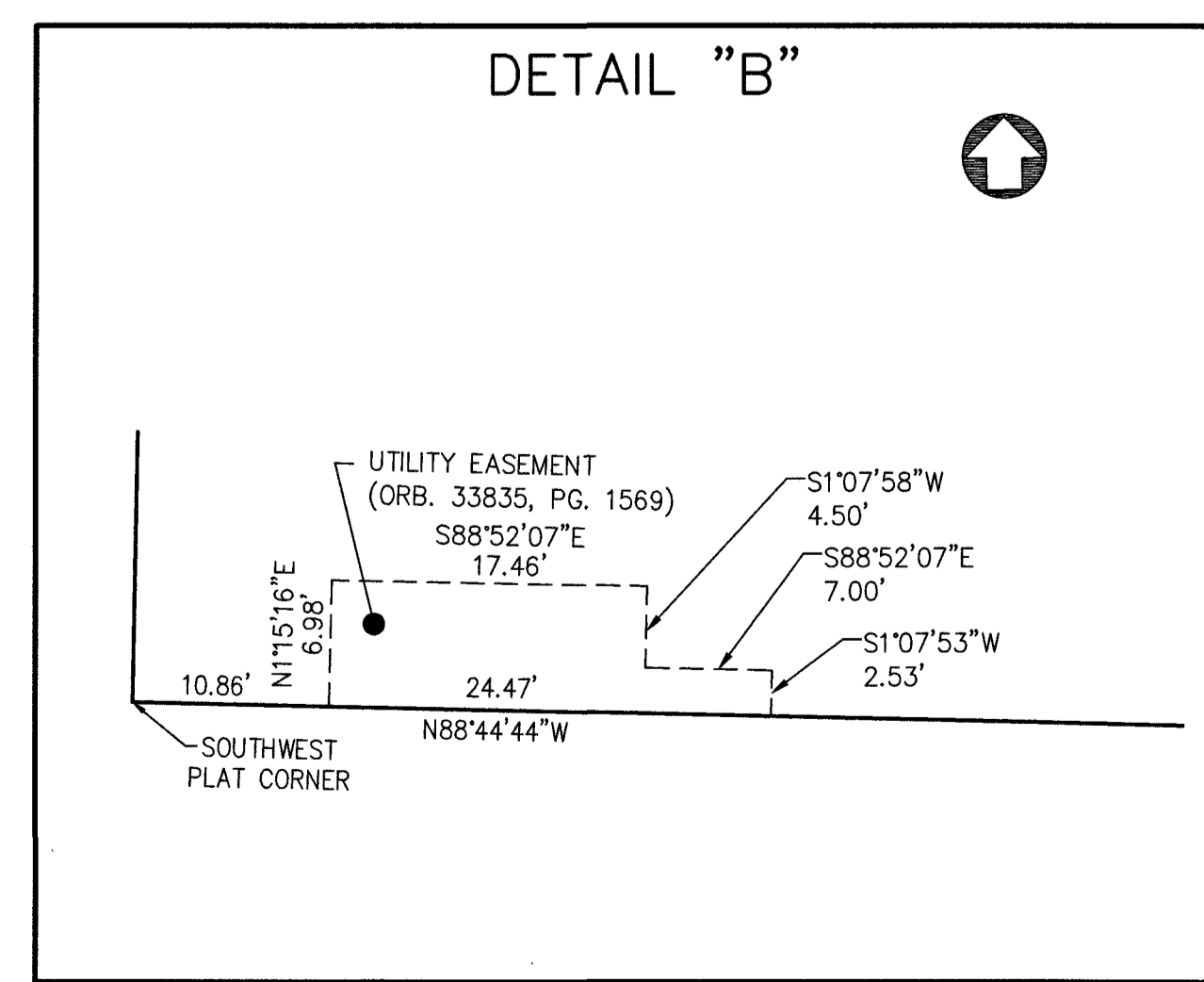
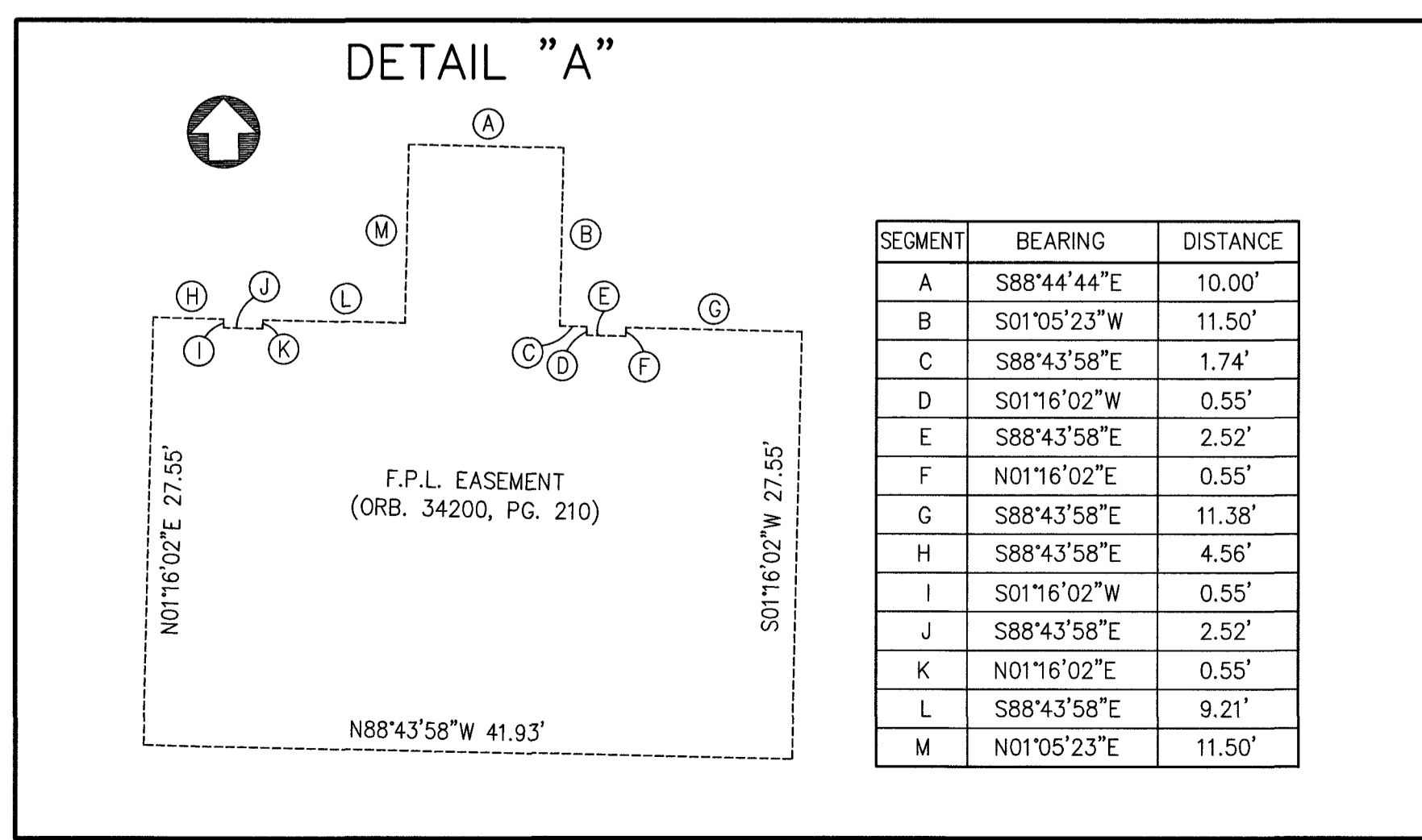
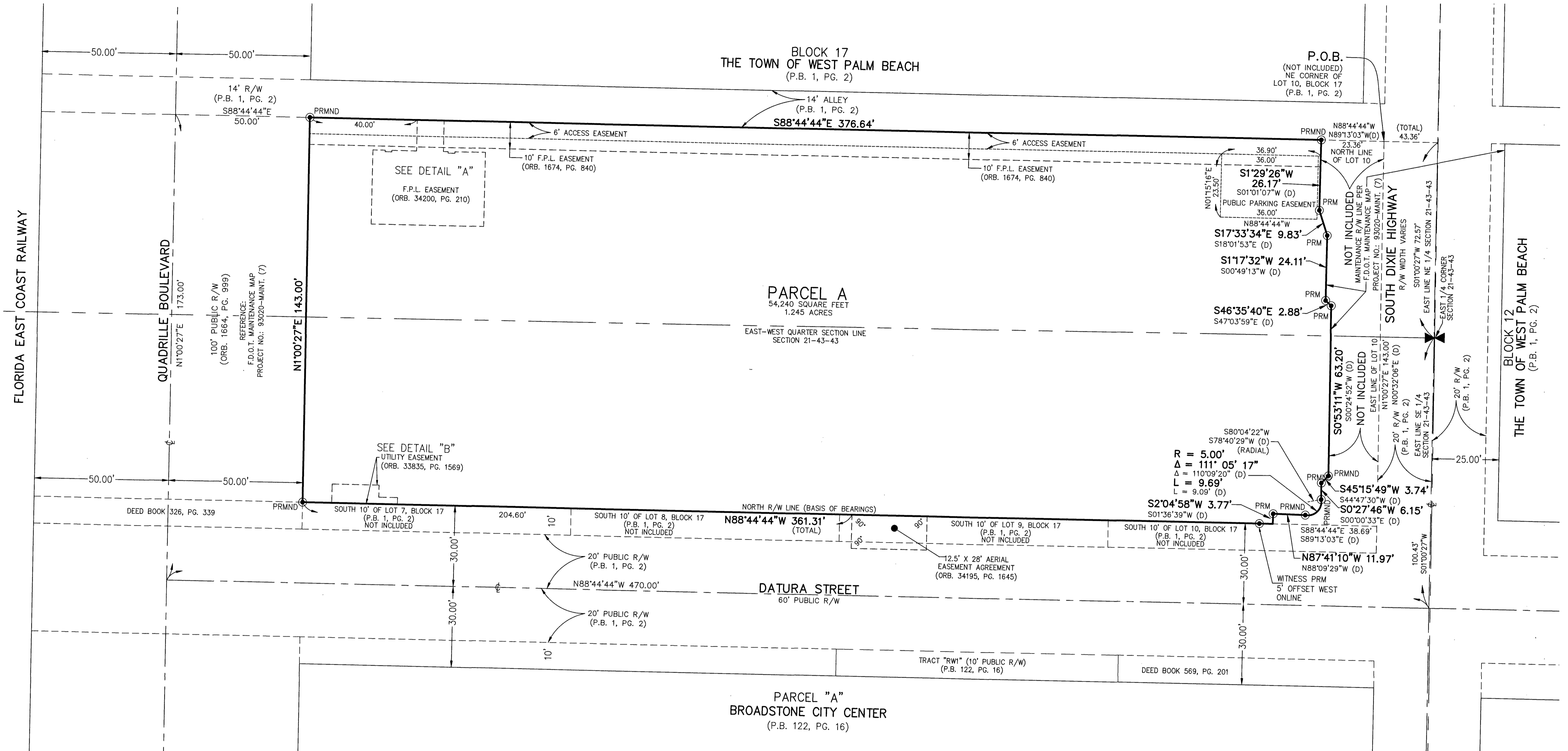
DATURA SENIOR LIVING COMMUNITY

A REPLAT OF A PORTION OF BLOCK 17, THE TOWN OF WEST PALM BEACH,
 RECORDED IN PLAT BOOK 1, PAGE 2, PALM BEACH COUNTY PUBLIC RECORDS,
 LYING IN SECTION 21, TOWNSHIP 43 SOUTH, RANGE 43 EAST, CITY OF WEST PALM BEACH, PALM BEACH COUNTY, FLORIDA



20

SHEET 2 OF 2



- LEGEND AND ABBREVIATIONS:**
- LB - LICENSED BUSINESS
 - ORB. - OFFICIAL RECORDS BOOK
 - P.B. - PLAT BOOK
 - PG. - PAGE
 - P.O.B. - POINT OF BEGINNING
 - PLS - PROFESSIONAL LAND SURVEYOR
 - P.S.M. - PROFESSIONAL SURVEYOR & MAPPER
 - R/W - RIGHT-OF-WAY
 - R - RADIUS
 - L - ARC LENGTH OR DISTANCE
 - Δ - CENTRAL ANGLE (DELTA)
 - ⊕ - CENTERLINE
 - PRM - PERMANENT REFERENCE MONUMENT
4"x4"x24" CONCRETE AND DISC
STAMPED PRM LB3591
 - PRMND - PERMANENT REFERENCE MONUMENT
NAIL AND DISC
STAMPED PRM LB3591

THIS INSTRUMENT PREPARED BY
 DAVID E. ROHAL
 OF
CAULFIELD & WHEELER, INC.
 SURVEYORS - ENGINEERS - PLANNERS
 7900 GLADES ROAD, SUITE 100
 BOCA RATON, FLORIDA 33434 - (561)392-1991
 CERTIFICATE OF AUTHORIZATION NO. LB3591